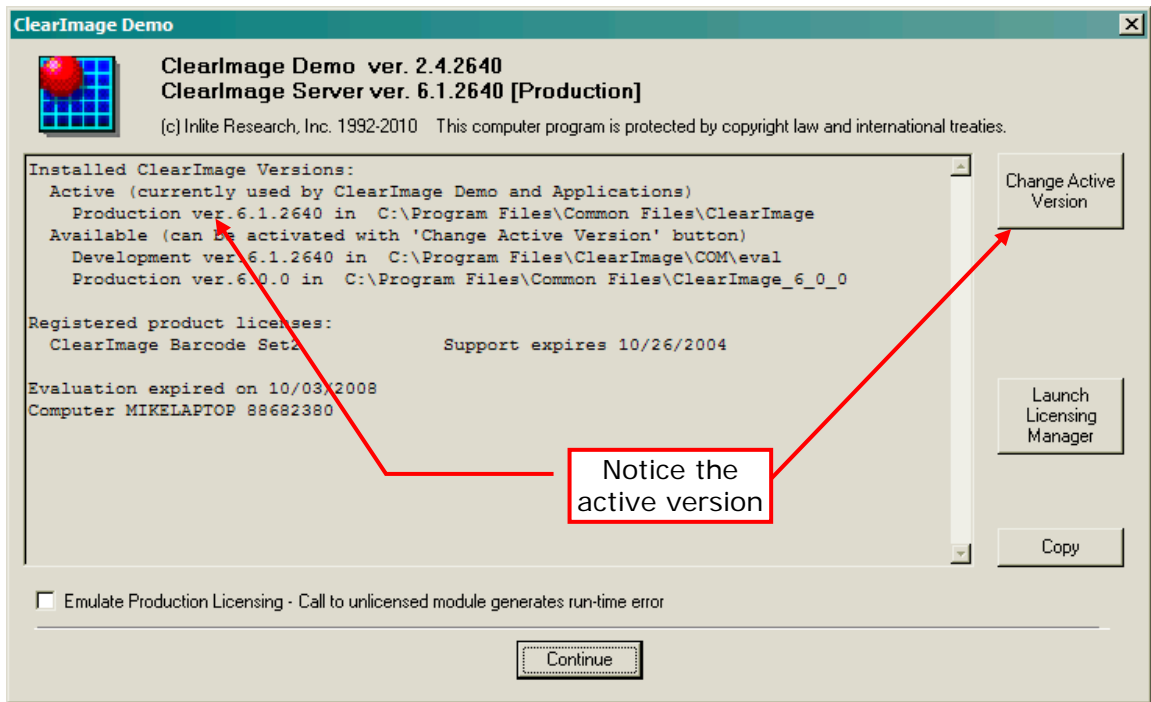




## Using the SDK Demo Application Splash Screen to select versions

On the development computer, where you installed the SDK, you run the ClearImage Demo Application. Click the **Change Active Version** button.



Since you installed an SDK, you will see the one Development version, which represents the last SDK that you installed. If there is also a PDK installed on the computer you will see the Production version. If you saved and renamed the previous PDK or earlier releases of ClearImage on the computer, you will see them as additional production versions, as this example shows.

## ClearImage Operating Modes

The ClearImage servers are licensed software engines that we call Modules. The licensing manager shows their license status. ClearImage API functions which are called without the relevant license are termed Unlicensed Function Calls. The ClearImage servers exhibit four modes of behavior described below.

### Development Version

The DEVELOPMENT version (SDK) installation exhibits two modes of operation:

- Evaluation Mode for the first 60 days
- Development Mode afterwards
- It ignores the licensing status of the computer

Note:

1. The ClearImage Demo Application is a licensed application that is always available.
2. The SDK release level can be different from the PDK release level. Downloading the latest SDK lets you test out new releases before deploying them into production

### Production Version

The PRODUCTION version (PDK) always operates in Production Mode.

You may keep multiple releases on hand in different directories on your computers. Only the one that you select as the ACTIVE Version will be used by your applications.

## Mode Behavior

### Evaluation Mode - SDK

Evaluation mode exists for the first 60 days following the first installation of the SDK software. During this time, all the modules and their API functions are available, without any limitations.

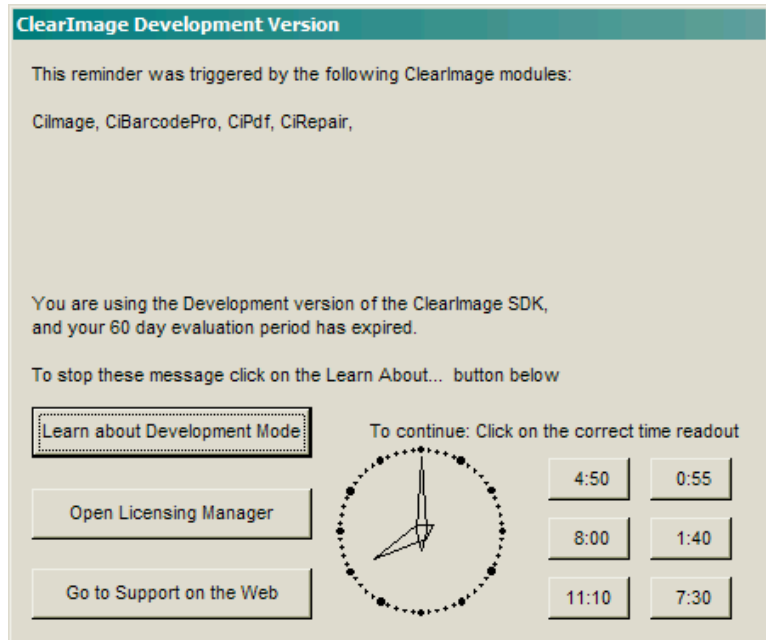
### Development Mode - SDK

The SDK transitions to this mode after 60 days. Any API call will trigger the software will issue an informational dialog box on a random basis, as shown to the right.

The only way to avoid these messages is to purchase a license and install a PDK Production Version.

These dialog boxes will interfere with your application testing or staging under the following circumstance:

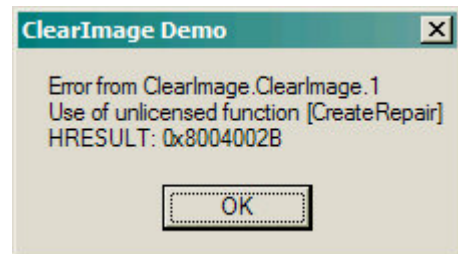
- Testing takes place at high speed for an extended time period, or
- The application is a Windows service, which cannot interact with the user, or
- The testing is performed on an unattended server.



### Production Mode -PDK

In Production Mode licenses matter. EVERY unlicensed call returns an error code. The calling application is expected to intercept and deal with the error return.

The ClearImage Demo application can also be made to demonstrate these error messages for diagnostic purposes, as follows:



- Select a PRODUCTION version to be active
- Check the **Emulate Production Licensing** box at the bottom of the splash screen