


Introduction: Visual Barcode Designer uses several kinds of data to form the barcodes. This note describes which files to collect in order to report problems with VBD. Send all the files by email to support@inliteresearch.com

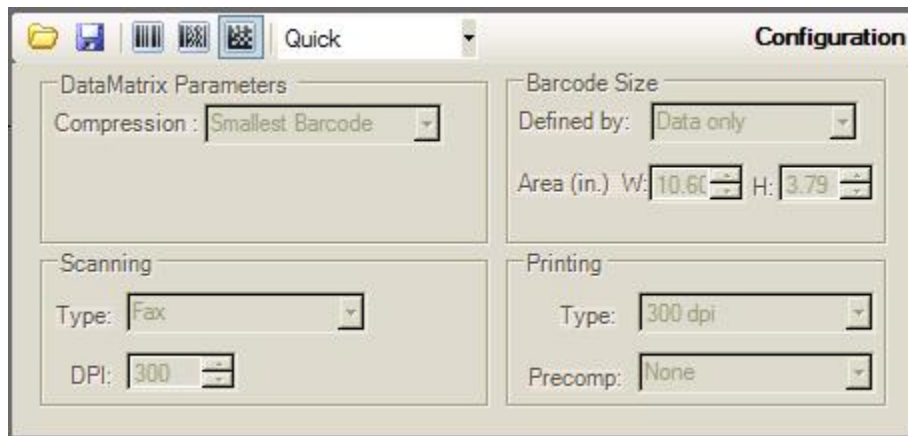
Background Image File

VBD uses either a blank image, or an image imported by the user. If you are using your image as the background, please send it.


- If the file is a bitmap, then first ZIP it to reduce its size.
- Change the extension to `filename.zxx` to allow it to bypass email virus checking

Configuration File

Click  in the Configuration Panel to save your current barcode configuration specifications in a `filename.vbd` file.



Data File

Click  in the Data Panel to save your current sample data in a file. Note that you can also import such data in txt, xml, bin or dat format.

