



## Operating Modes of ClearImage COM

**Purpose:** ClearImage COM servers support three modes of operation. This note explains what they are and how to configure the behavior of the servers for evaluation, development and production.

### ClearImage COM Operating Modes

The ClearImage COM servers are organized as licensed software engines that we call Modules. The licensing manager shows their license status. Upon initialization they look for a license. ClearImage COM functions invoked in the absence of the relevant license (for the module that contains the called function) are termed Unlicensed Function Calls. The servers have three modes of behavior with respect to unlicensed function calls: Evaluation, Development, and Production Modes.

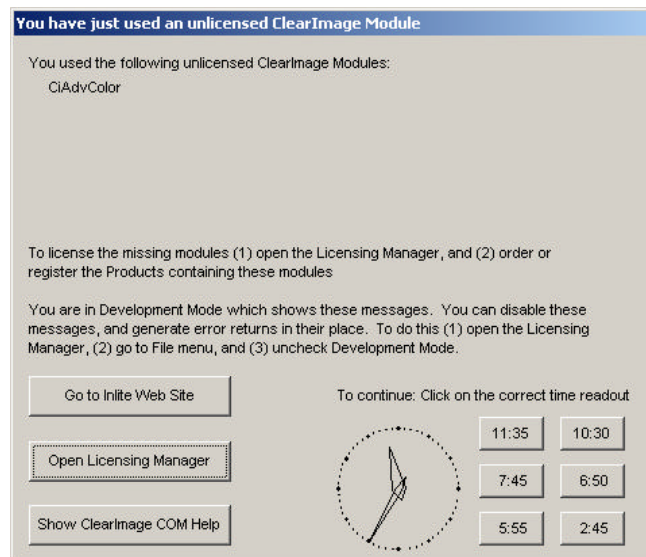
#### Evaluation Mode

Evaluation mode occurs for the first 60 days following a new installation of the module. During this time, all the module's functions are active. The evaluation mode terminates after the first 60 days and the behavior transitions either development or production mode.

#### Development Mode

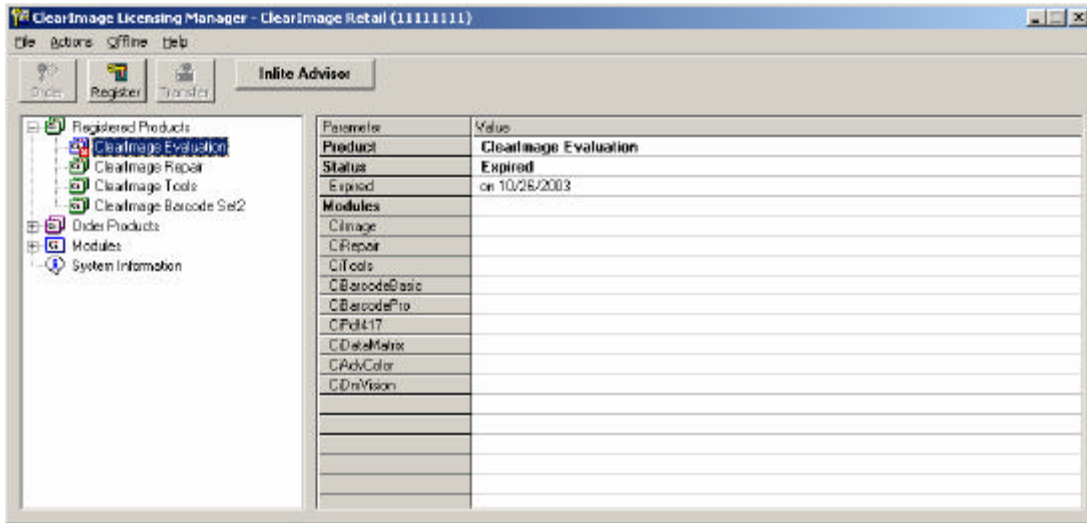
Development Mode allows unlicensed functions to operate, but it will throw up a dialog box (shown to the right) every so many operations. The purpose of the dialog box is to offer access to ClearImage COM modules for purposes of testing and support.

The dialog box requests the operator to punch the clock in order to continue. The calling application will be oblivious to this event, and will continue to operate as required once the clock is punched.



*Note: Some applications and services may time out while waiting for the operator to press the button on the dialog box. In such cases it will be necessary to purchase an additional license.*





Applications can also define the global operating mode programmatically by using the DevMode property of the CiServer object:

```
CiServer.DevMode(1) = NewMode
```

## Local Operating Mode

A using application can set its own local operating mode by:

```
CiServer.DevMode(0) = NewMode
```

The local operating mode affects the behavior of the modules with respect to only that application which set the behavior. Other applications will see the global behavior. For example, a new application can be tested with local mode set to DEVELOPMENT while the rest of the applications run in global PRODUCTION mode.

## ClearImage Demo Application

The ClearImage Demo application, a part of the ClearImage COM SDK is the only application that is perpetually in the evaluation mode. The application will continue to operate beyond the initial evaluation period. Furthermore, new downloads of the application will make available the new features and capabilities for testing and evaluation.

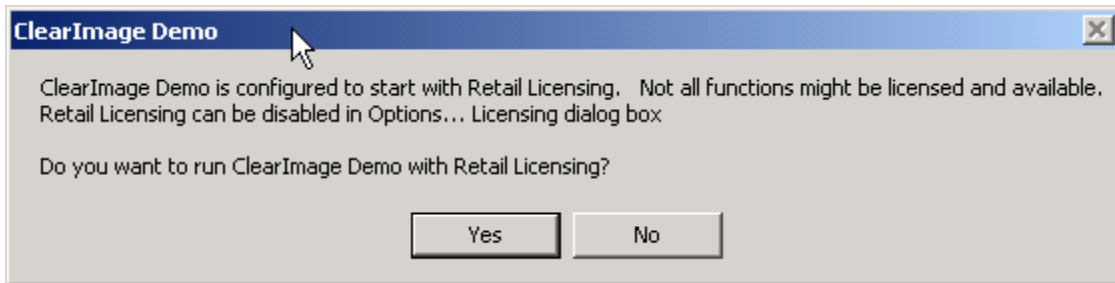
## Troubleshooting Customer Computers

If you are not certain about which licenses are required for a proposed application, the DEMO application can help to identify them.

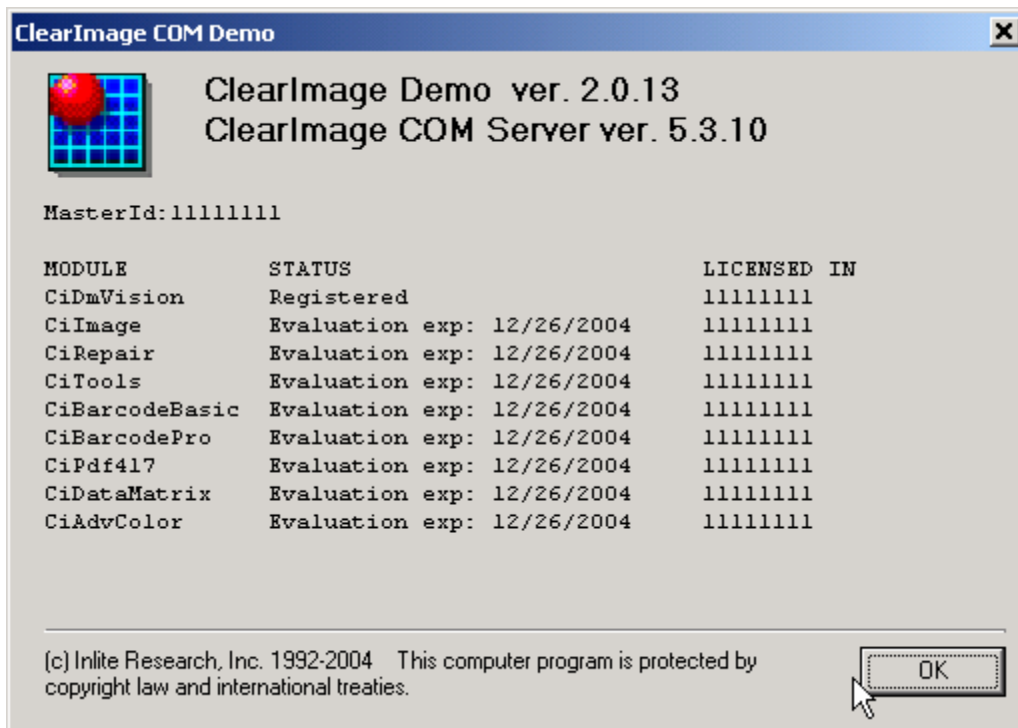
After SDK is installed on the target computer:

- Configure Demo to simulate your production application:
  - Start ClearImage Demo.

- Click Options. Select on the left side Demo Preferences - > Runtime Licensing (see screen shot bellow)
  - Check "Start Demo using Retail Licensing"
  - Check "Production Mode"
  - Click OK
  - Close demo Application
- Restart Demo



- Click "Yes" when prompted:
- Then try out the list of operations desired. In this mode the Demo Application will immediately display the error messages for any modules that are not licensed.
- Module licensing status can be verify by clicking Help menu, About ClearImage Demo. In Development or Production modes the dialog box shows that the MasterId is 11111111:



- Return Demo to normal Evaluation Mode.
  - Click Options. Select on the left side Demo Preferences - > Runtime Licensing (see screen shot below)
  - Uncheck "Start Demo using Retail Licensing"
  - Restart ClearImage Demo
  - Module licensing status can be verify by clicking Help menu, About ClearImage Demo. In Evaluation mode the dialog box shows that the MasterId is 22561922:

